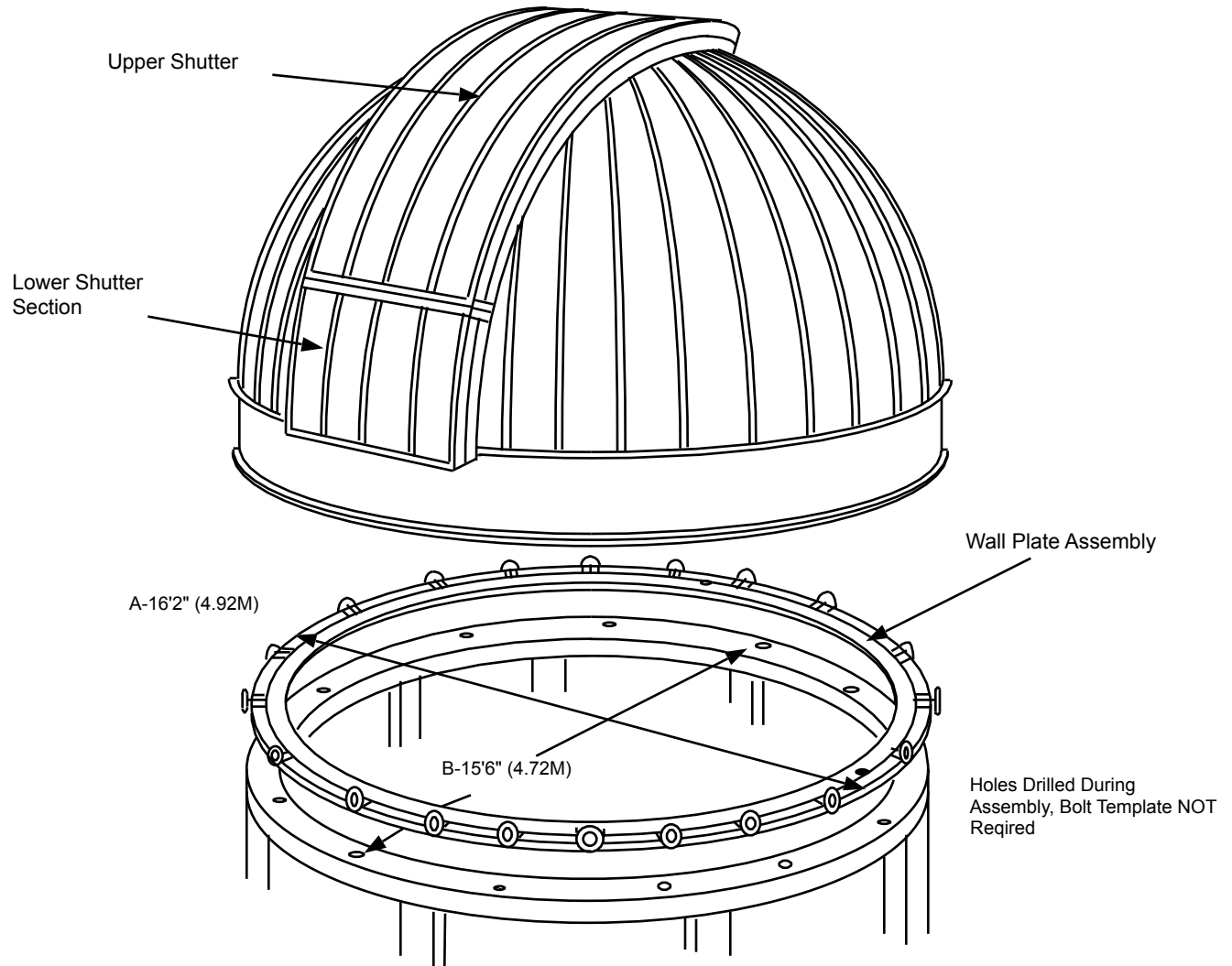
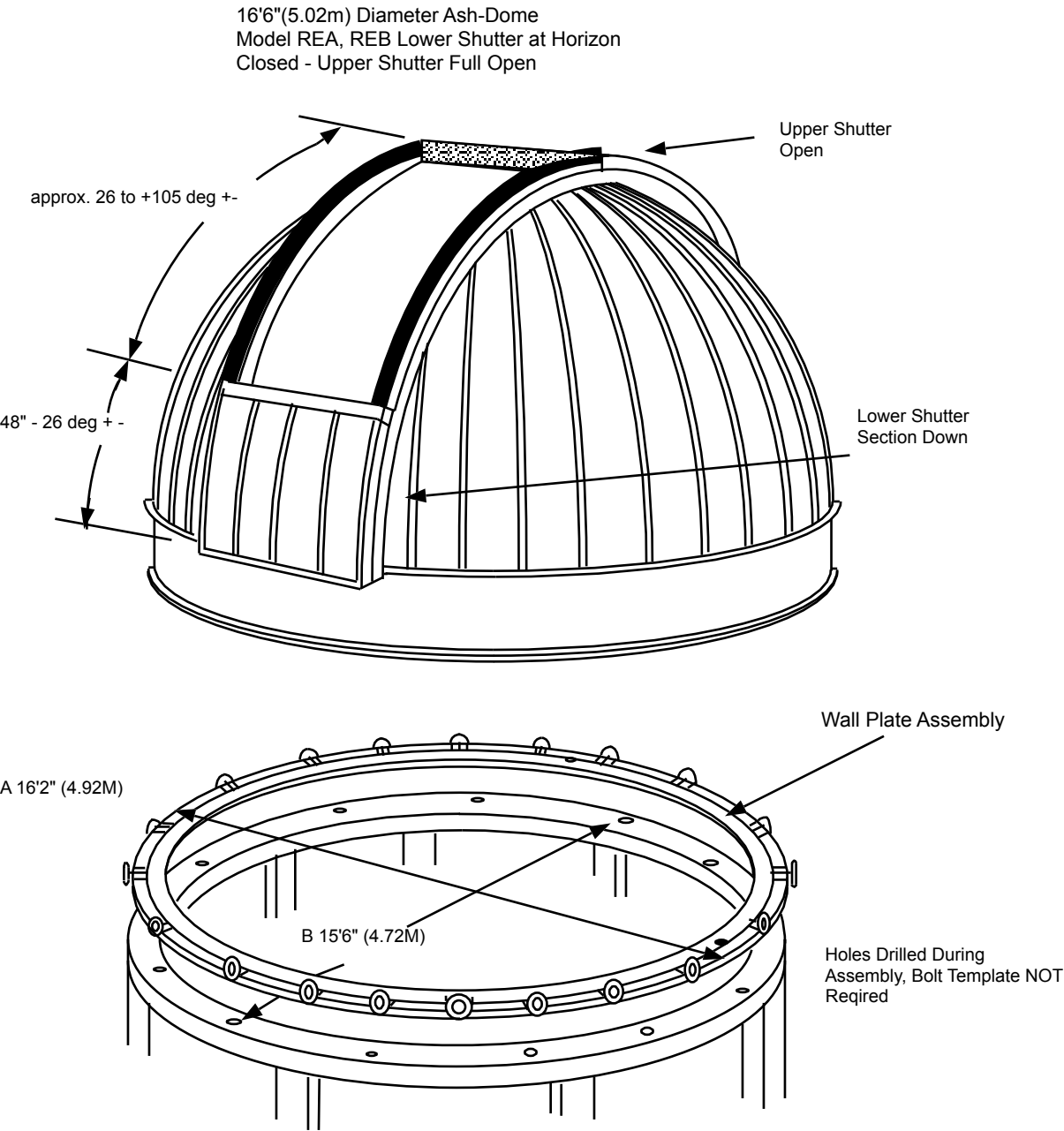


16'6"(5.02m) Diameter Ash-Dome  
Model REA, REB Shutter Closed

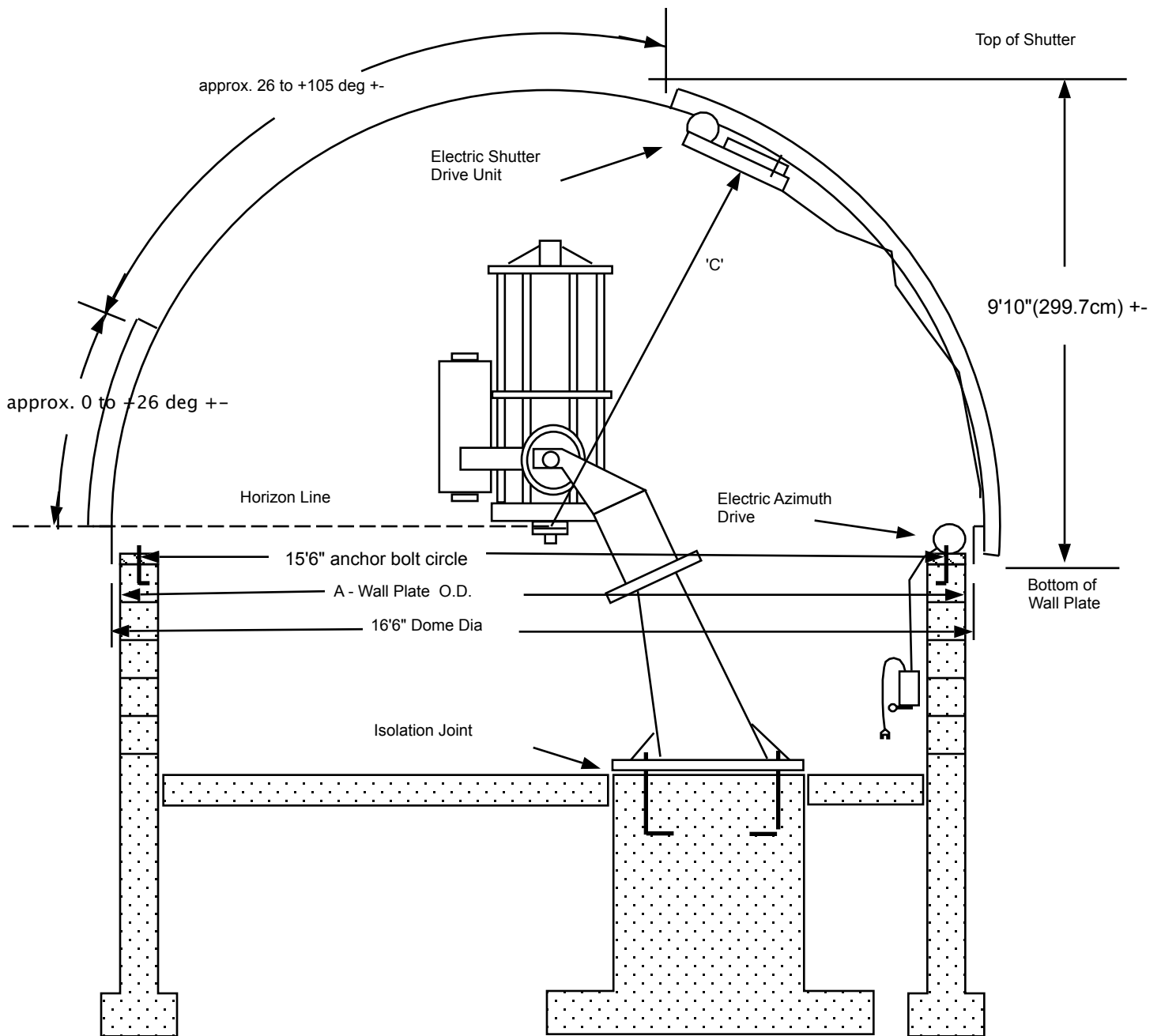


| Dome Diameter | 'A' Diameter Outside Wall Plate | ID Wall Plate | 'B' Diameter Anchor Bolt Circle | Anchor Bolts Required | Anchor Bolt Spacing |
|---------------|---------------------------------|---------------|---------------------------------|-----------------------|---------------------|
| 16'6" (5.02M) | 16'2" (4.92M)                   | 15'3" (4.64m) | 15'6" (4.72M)                   | 28                    | 20-13/16" - 5.28cm  |



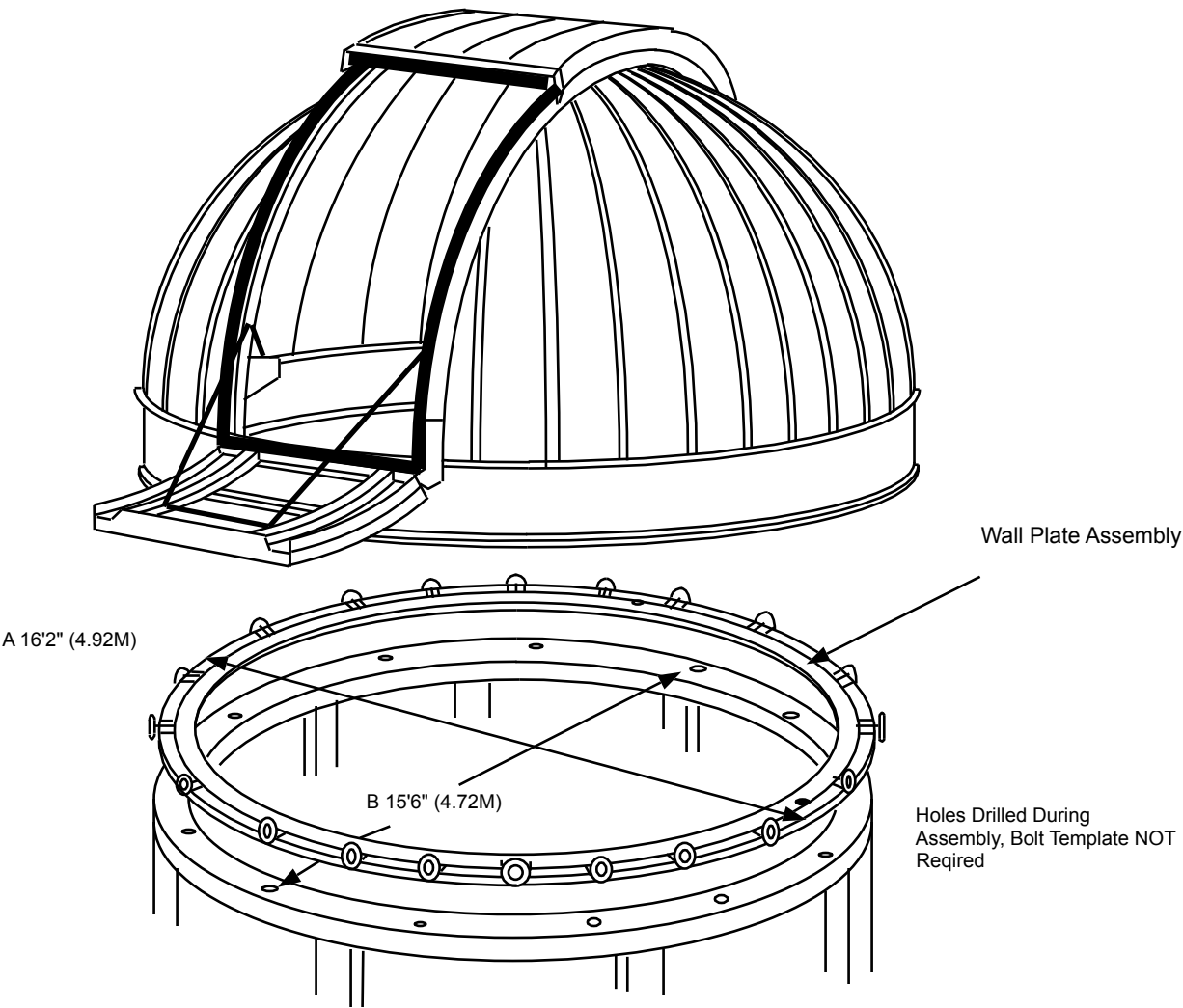
| Dome Diameter | 'A' Diameter Outside Wall Plate | 'B' Diameter Anchor Bolt Circle | Lower Shutter L in Degrees | Lower Shutter Closed Clear Aperture |
|---------------|---------------------------------|---------------------------------|----------------------------|-------------------------------------|
| 16'6" (5.02M) | 16'2" (4.92M)                   | 15'6" (4.72M)                   | 48" - 26 deg +/-           | 26 - 105 deg +/-                    |

Model REB Lower Shutter Closed Upper Shutter Open

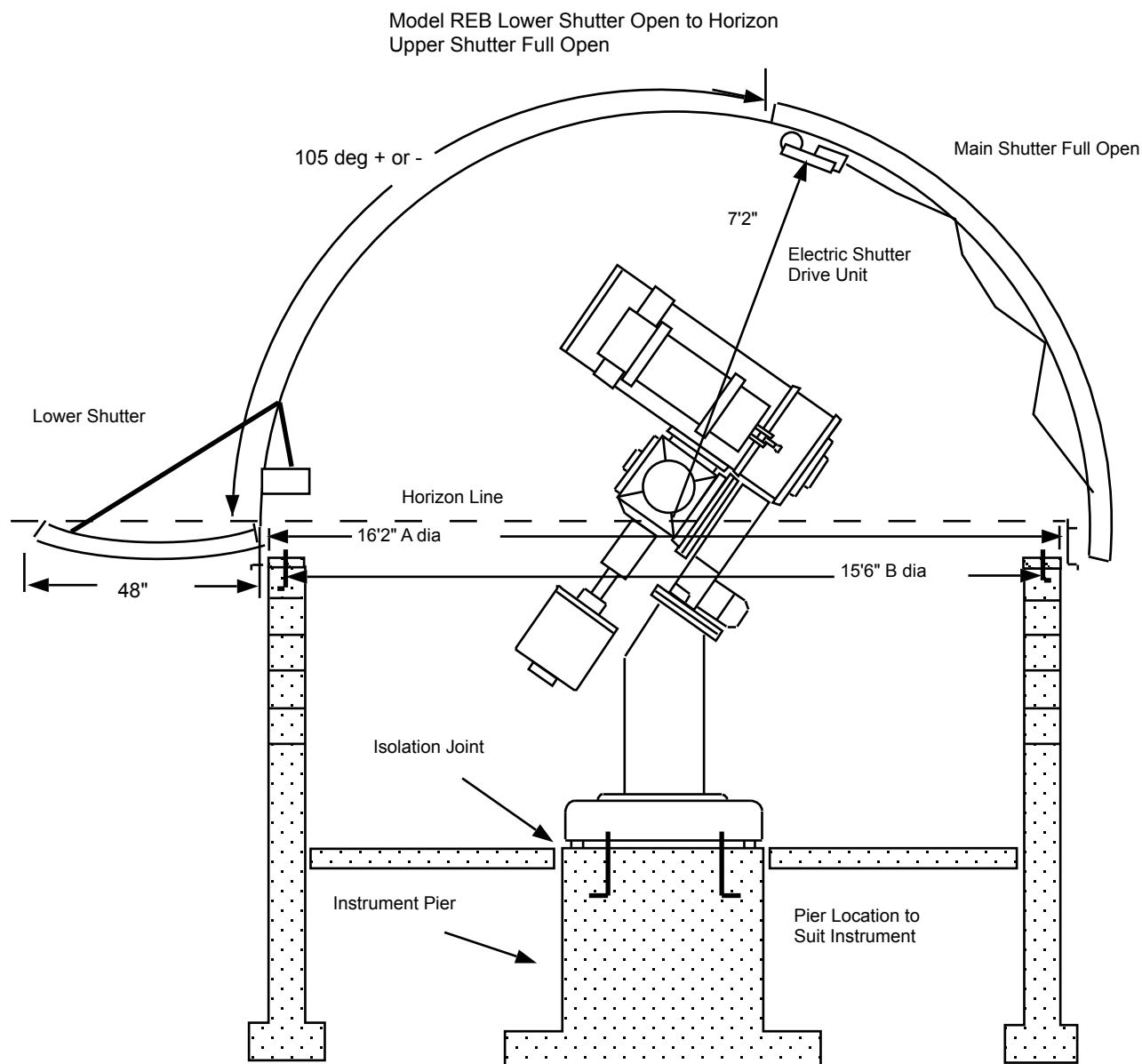


| Dome Diameter | 'A' Diameter<br>Outside Wall<br>Plate | 'B' Diameter<br>Anchor Bolt<br>Circle | 'C' Dimension<br>Closest Obstruction | Lower Shutter |
|---------------|---------------------------------------|---------------------------------------|--------------------------------------|---------------|
| 16'6" (5.02M) | 16'2" (4.92M)                         | 15'6" (4.72M)                         | 85" (215.9cm)                        | 48" (122 cm)  |

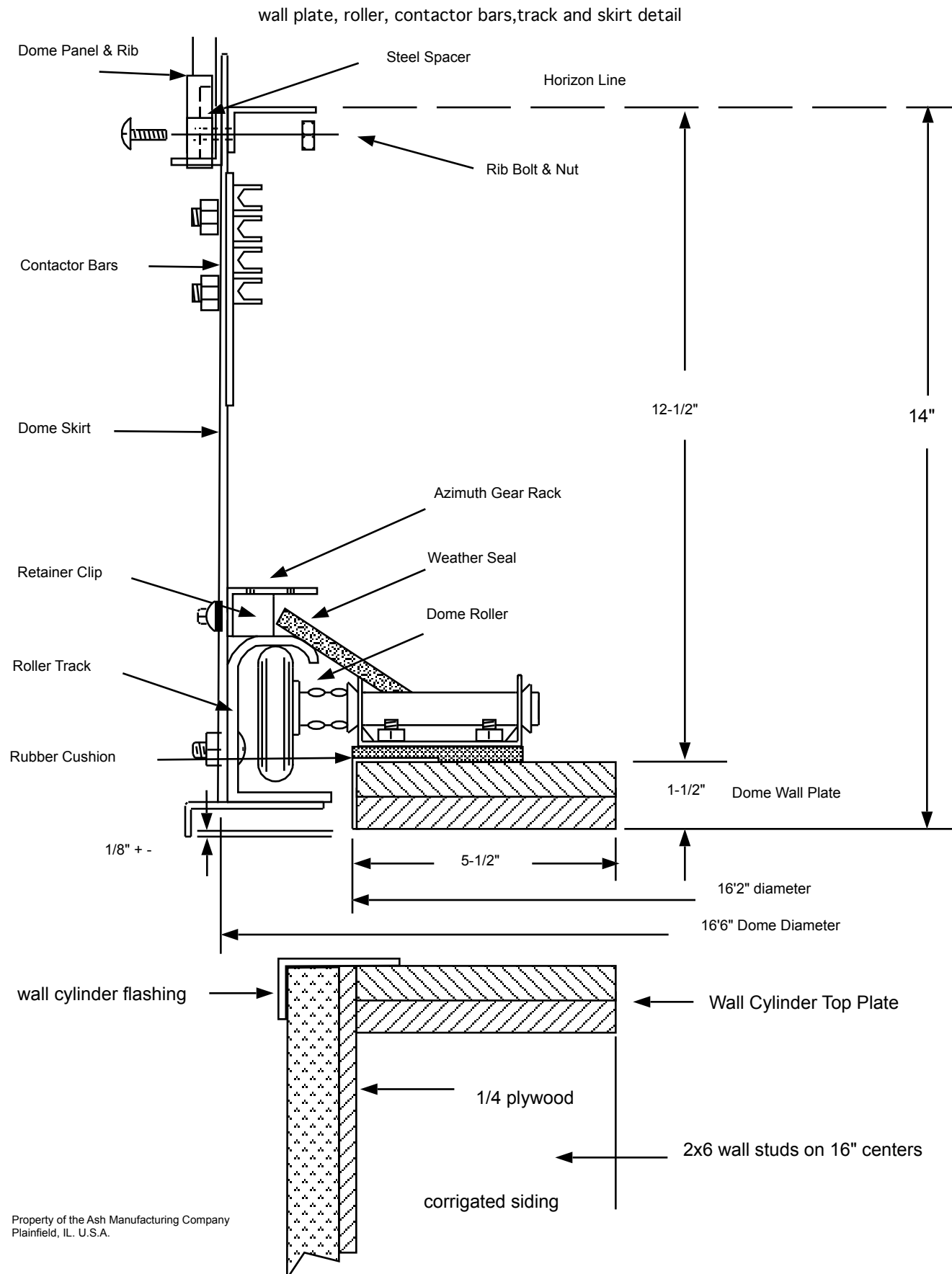
16'6" (5.02m) Diameter Ash-Dome Model REB  
Lower Shutter Open to Horizon

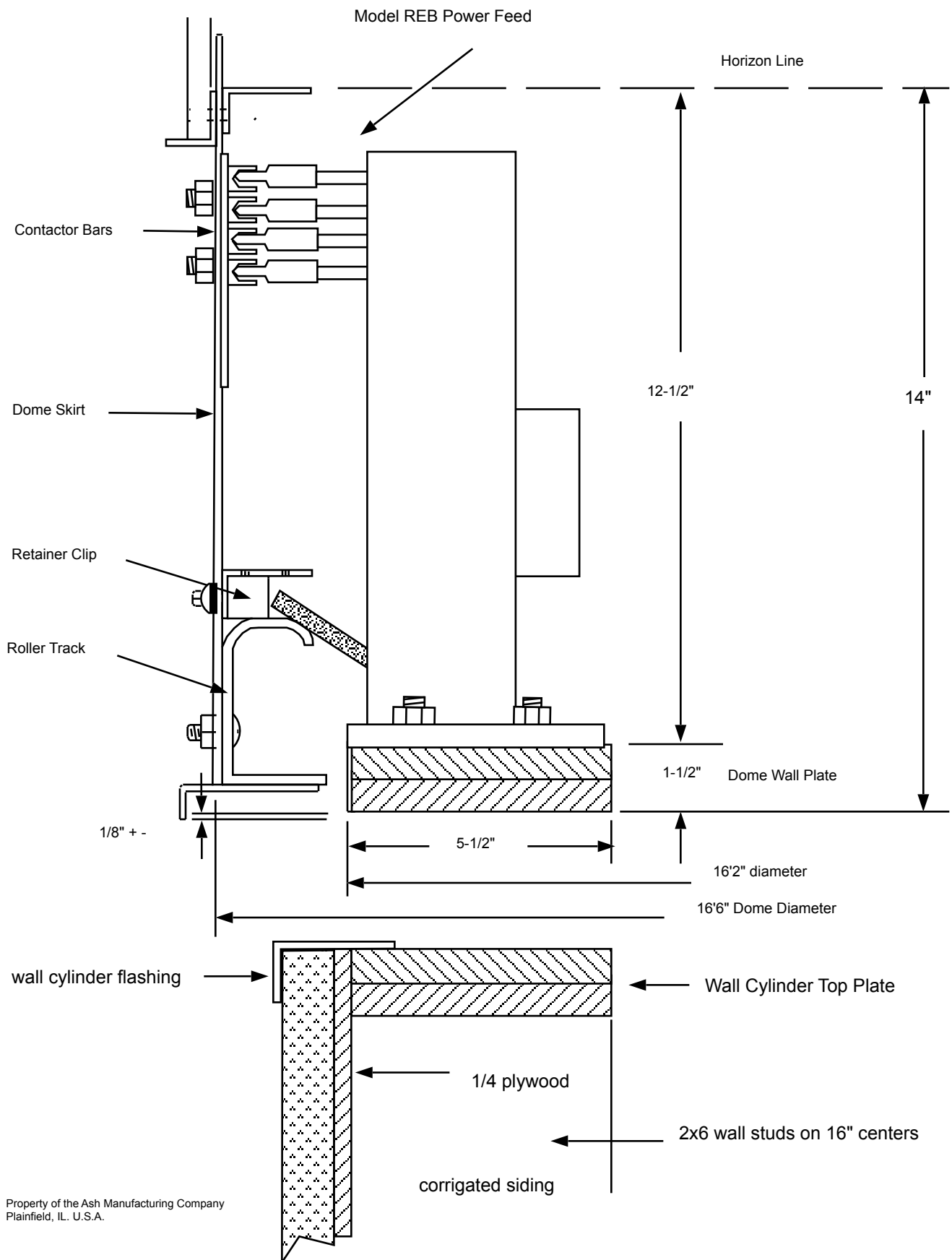


| Dome Diameter | 'A' Diameter Outside Wall Plate | 'B' Diameter Anchor Bolt Circle | Lower Shutter Raised Clear Viewing Aperture | Lower Shutter L in Degrees |
|---------------|---------------------------------|---------------------------------|---------------------------------------------|----------------------------|
| 16'6" (5.02M) | 16'2" (4.92M)                   | 15'6" (4.72M)                   | 0 to 79 deg +/-                             | 26 deg                     |



| Dome Diameter | 'A' Diameter<br>Outside Wall<br>Plate | 'B' Diameter<br>Anchor Bolt<br>Circle | Upper Shutter Raised<br>Drop-out Lowered<br>Clear Viewing Angle | Lower Shutter<br>L in Degrees |
|---------------|---------------------------------------|---------------------------------------|-----------------------------------------------------------------|-------------------------------|
| 16'6" (5.02M) | 16'2" (4.92M)                         | 15'6" (4.72M)                         | 0 to 105 deg +/-                                                | 26 +/-                        |

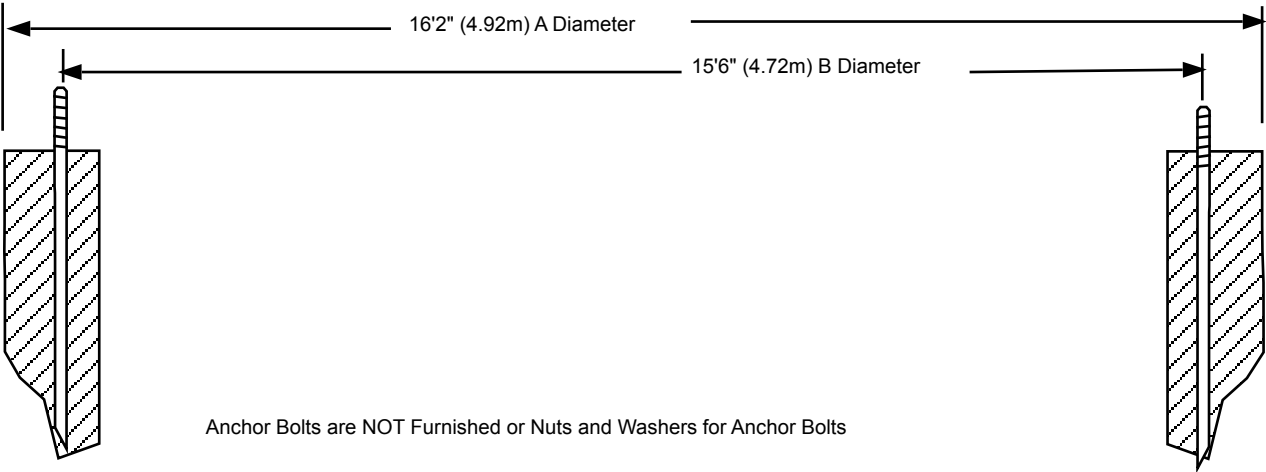
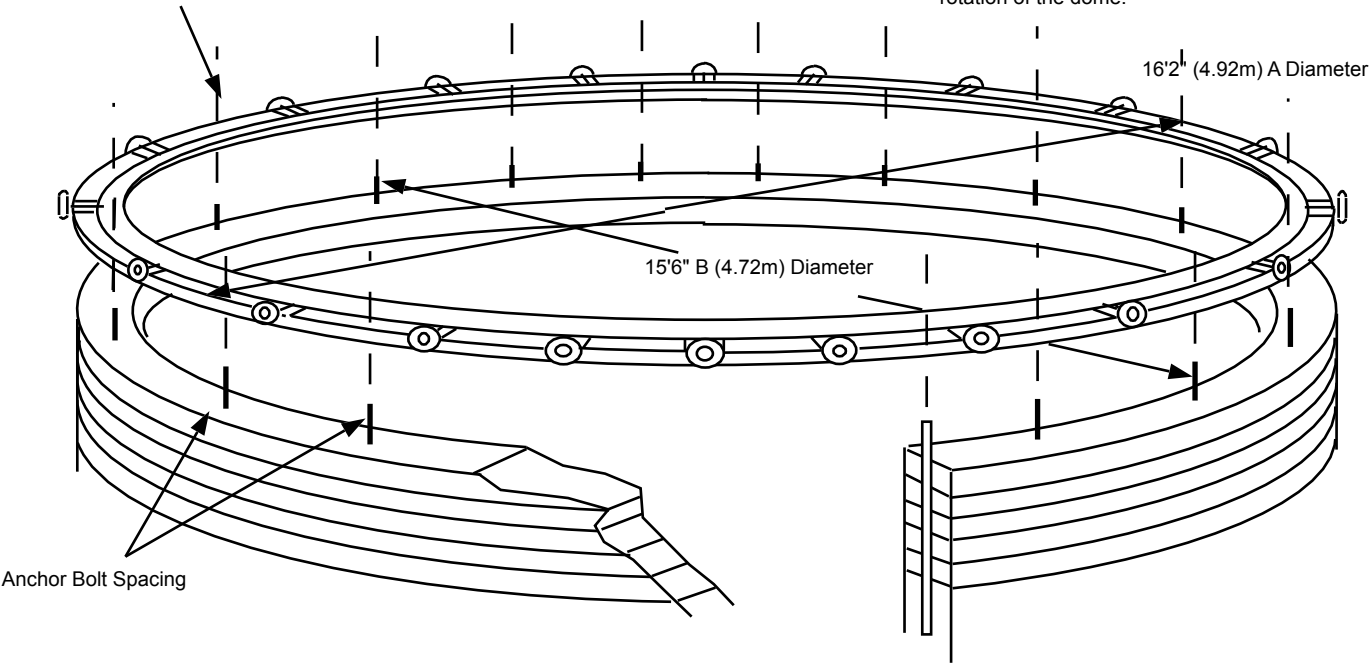




16'6"(5.02m) Diameter Ash-Dome  
Model REA, REB Wall Plate Assembly

Wall Plate Assembly is Drilled on the Job Site  
NO Template Required

If the anchor bolts are placed properly they will be  
between the dome rollers and not conflict with the  
rotation of the dome.

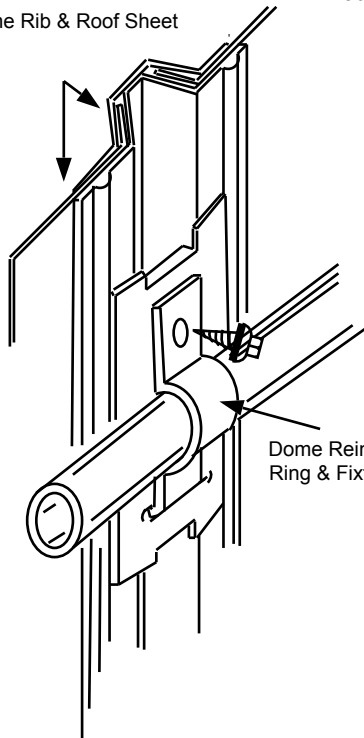


| Dome Diameter | 'A' Diameter<br>Outside Wall<br>Plate | 'B' Diameter<br>Anchor Bolt<br>Circle | Anchor Bolts<br>Required | Anchor Bolt<br>Spacing |
|---------------|---------------------------------------|---------------------------------------|--------------------------|------------------------|
| 16'6" (5.02M) | 16'2" (4.92M)                         | 15'6" (4.72M)                         | 28                       | 20-13/16"- 528.6mm     |



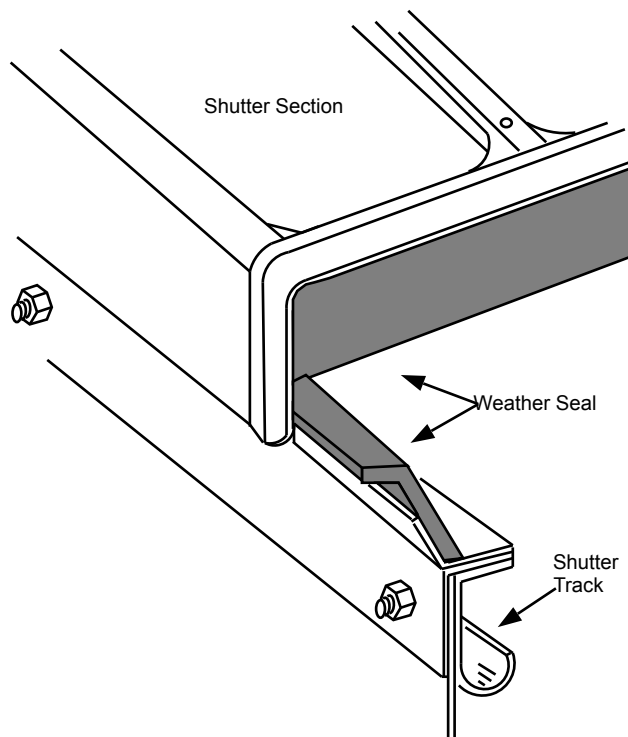
16'6"(5.02m) Diameter Ash-Dome  
Model REA, REB Basic Structure

Dome Rib & Roof Sheet



Dome Reinforcement  
Ring & Fixture

Shutter Section



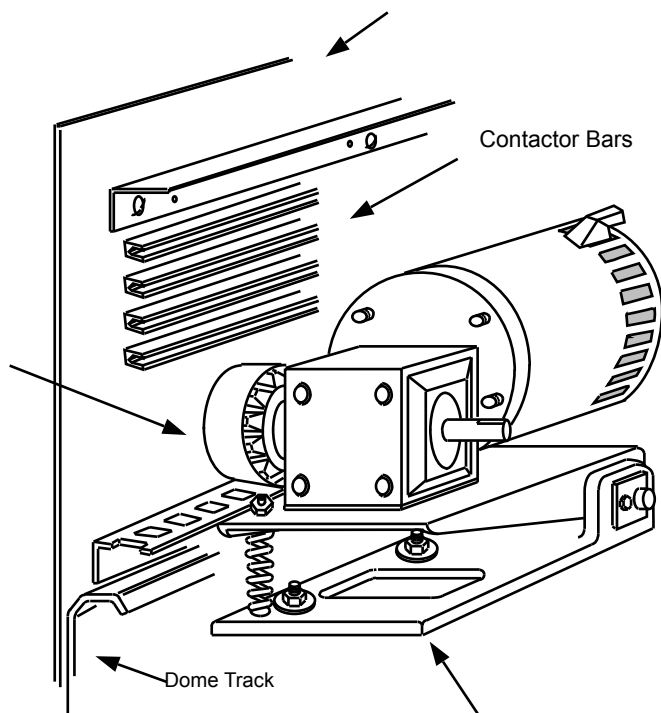
Weather Seal

Shutter  
Track

Dome Skirt

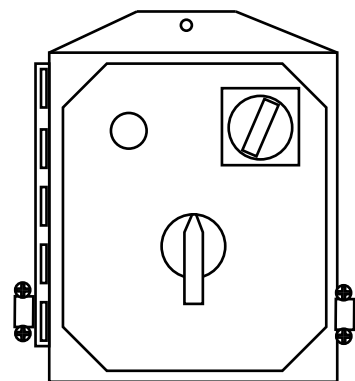
Contactor Bars

Azimuth Drive  
Gear

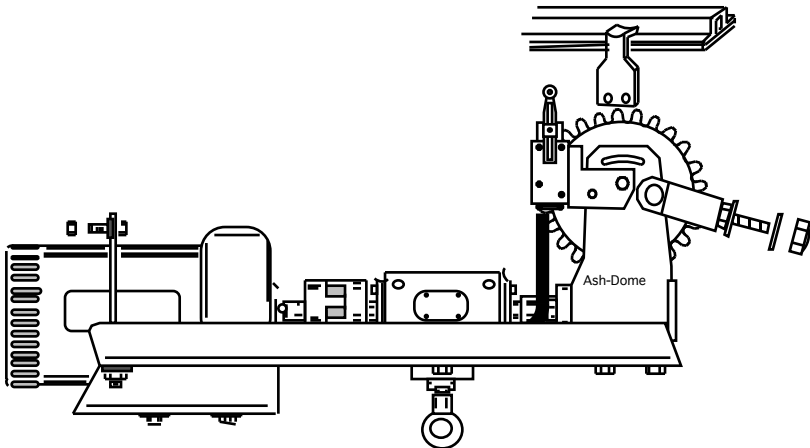


Dome Track

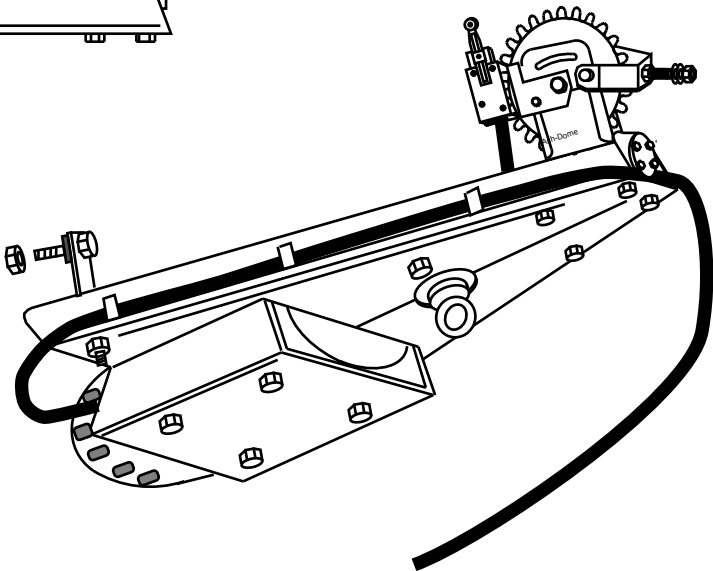
Azimuth Motor Base



16'6" (5.02m) Diameter Ash-Dome Model REA, REB Shutter Drive/Manual Override, Electric Operation



Shutter Drive / Manual Override



Shutter Switch and Outlet Mounting  
shutter switch panel

